

sarom ™  
combinations unexpected



IRIS

sarom™  
combinations unexpected



IRIS - 801



IRIS - 802



IRIS - 803



IRIS - 804



IRIS - 807



IRIS - 805



IRIS - 806



IRIS - 808



IRIS - 810



IRIS - 811



IRIS - 812



IRIS - 816



IRIS - 817



IRIS - 813



IRIS - 814



IRIS - 815



IRIS - 821



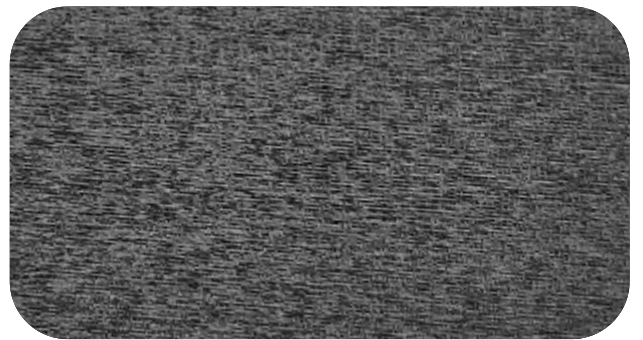
IRIS - 818



IRIS - 809



IRIS - 819



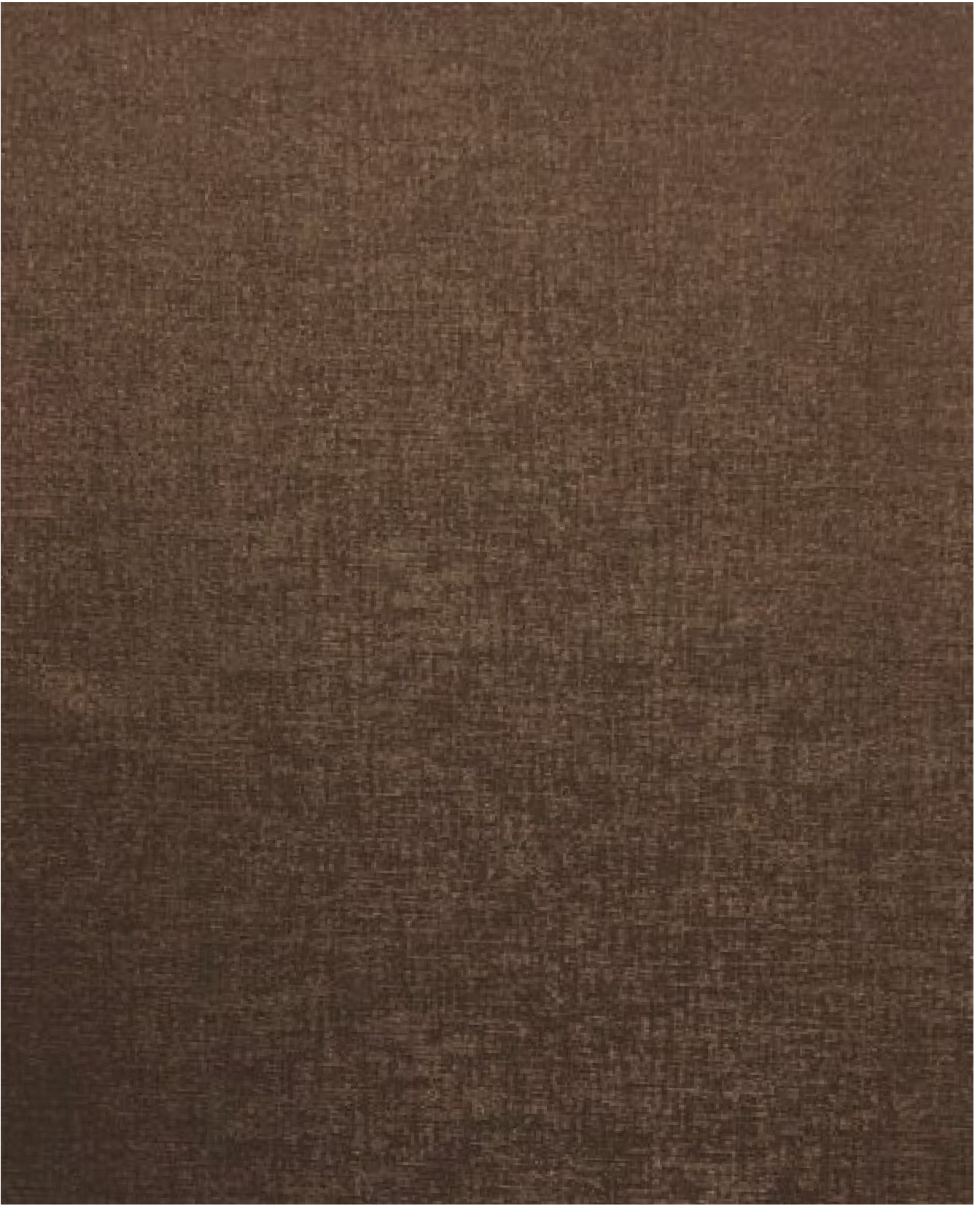
IRIS - 822



IRIS - 820



IRIS - 823



IRIS - 808

# IRIS

Design	Width (In Cms)	Weight	Composition	Tear Strength	Colour Fastness to Light	Parten Repeat (If any)
IRIS	140	615 ± 5%	100% Polyester	Nil	4 -5	N/A

1. We do not accept responsibility for any damage resulting from inappropriate use, chemical cleaning or additional impregnation.
2. Test results were gathered from various samples and therefore represent average indicative values.
3. Discolouration caused by clothing fabrics such as jenas does not represent a material defect. Minor colour deviations and discolouring in context of permissible industrial tolerance standards do not constitute reasons for claims .

Color may vary from batch to batch

### PU/PVC FABRIC CARE INSTRUCTIONS :

1. Vacuum and dust regularly.
2. Do not place heater close to PU/PVC fabric (No closer than 50 cm).
3. Protect from direct sunlight.
4. Wipe over contact areas regularly with clean soft cloth.
5. Avoid hard rubbing and scrubbing.
6. Treat all liquid and food spills immediately.
7. Clean contact areas of perspiration and body oils regularly.
8. Keep pets and sharp object away from PU/PVC fabric Fur is particularly cause permanent discoloration  
Claws Belt Buckles, Heels, Key, Knives or pull causing permanent PU/PVC fabric damage.

### Washing Instructions



Product Color May Slightly Vary From Original Due To Photographic Lighting Sources Or Your Screen Settings.



sarom ™  
combinations unexpected  
[www.sarom.co.in](http://www.sarom.co.in)