

saromi™
combinations unexpected



▲
AVITA



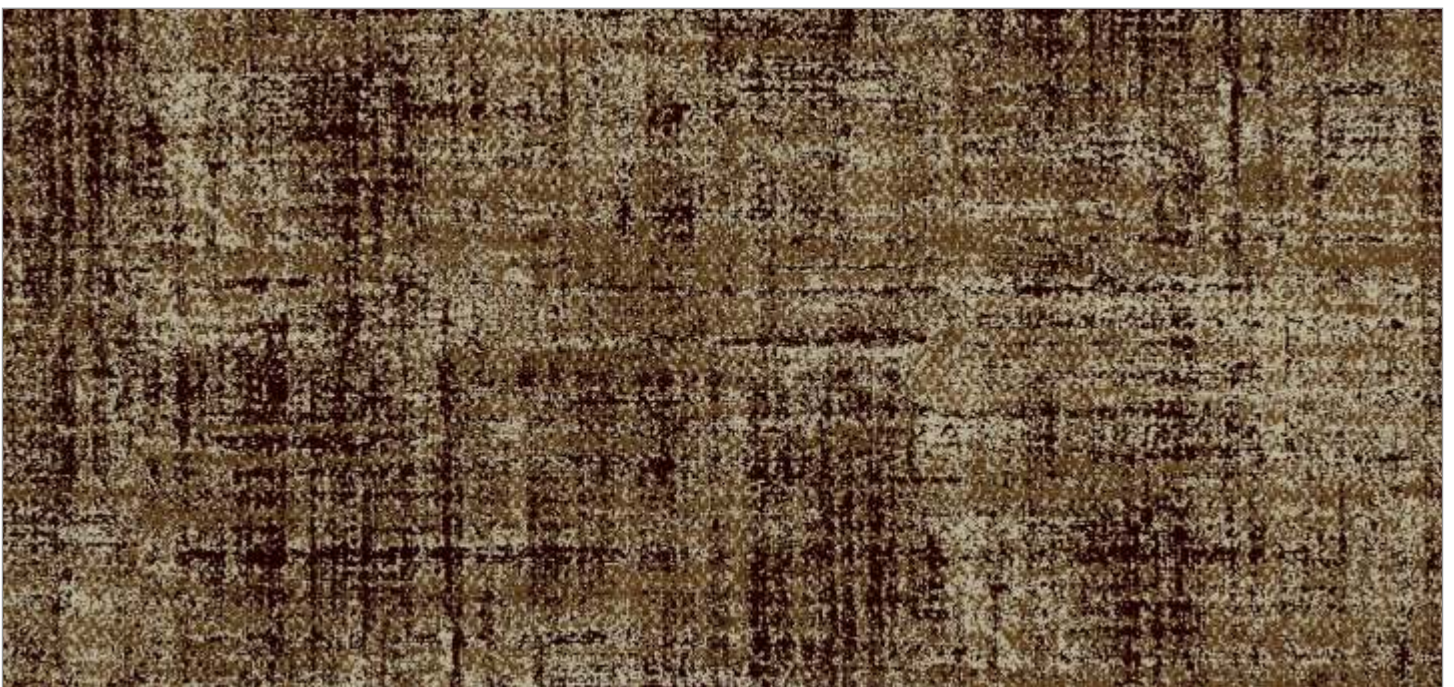
Please turn over for design

AVITA | 702



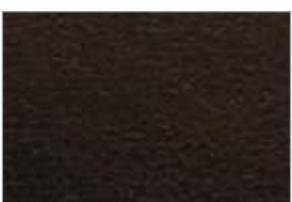
Please turn over for design

AVITA | 701



Please turn over for design

AVITA | 703



ALBANY | 109



MARBLE | 708



IBIZA | 721



MARBLE | 710



MARBLE | 709



IBIZA | 720



IBIZA | 722



COWBOY | 907



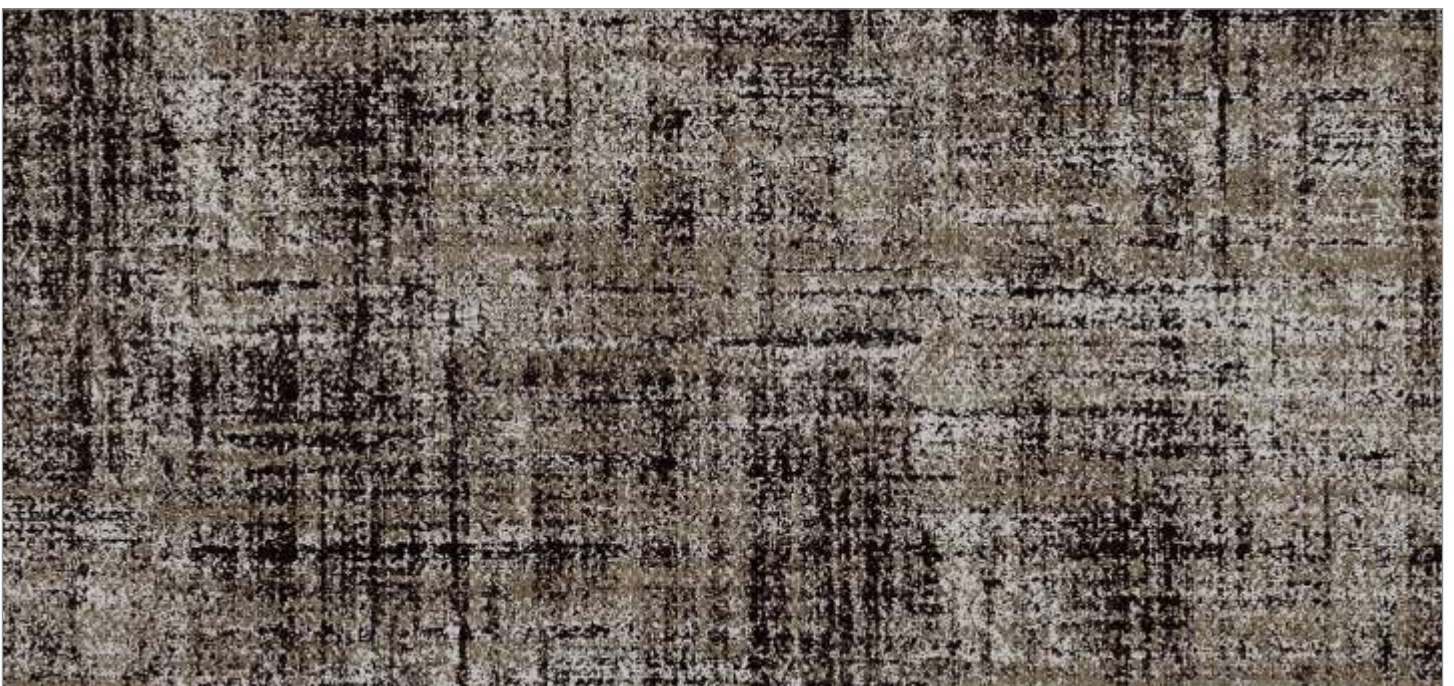
Please turn over for design

AVITA | 705



Please turn over for design

AVITA | 704



Please turn over for design

AVITA | 706



BRONX | 909



IBIZA | 768



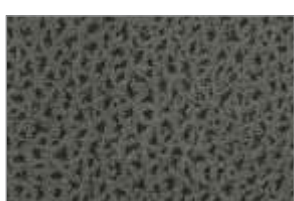
COWBOY | 911



MARBLE | 731



IBIZA | 772



PARAMOUNT | 925



APACHE | 914



IBIZA | 771



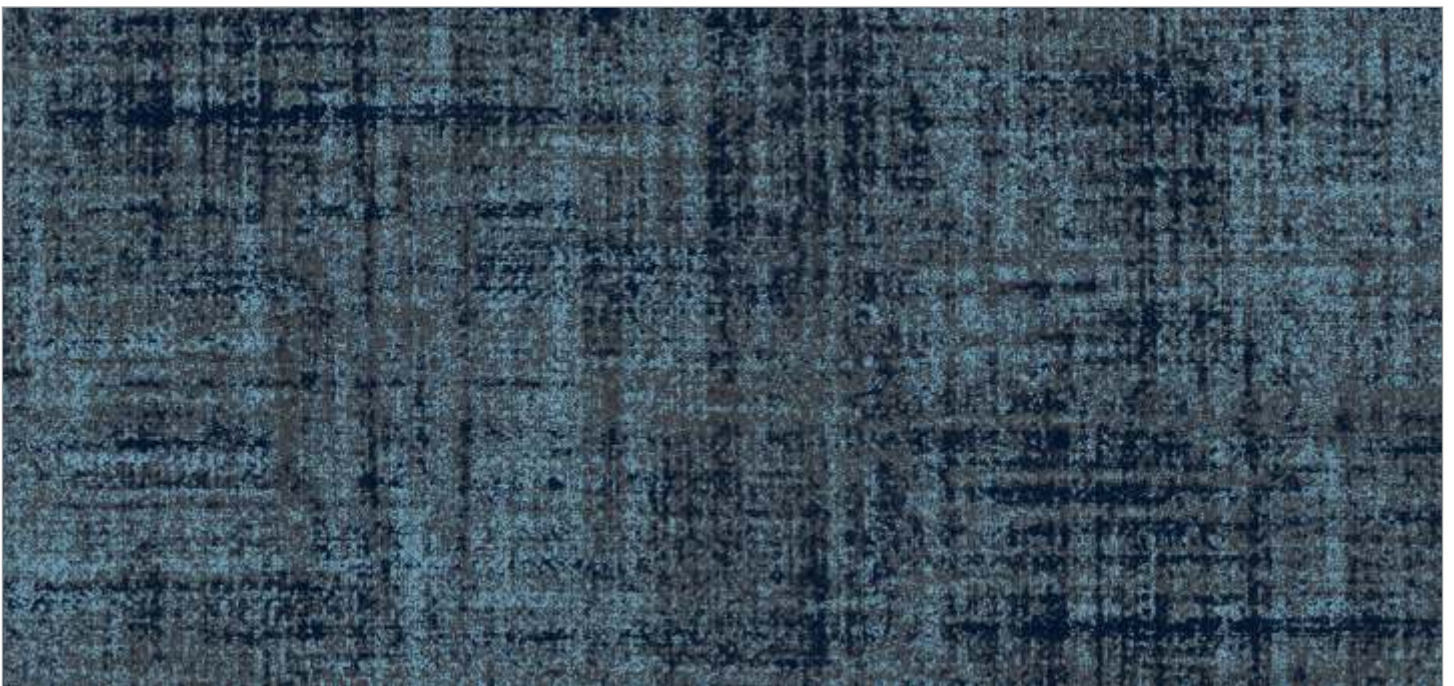
Please turn over for design

AVITA | 708



Please turn over for design

AVITA | 707



Please turn over for design

AVITA | 709



AMBER | 110



IBIZA | 749



MARBLE | 722



IBIZA | 755



COWBOY | 914



COWBOY | 915



IBIZA | 752



MARBLE | 723



Please turn over for design

AVITA | 711



Please turn over for design

AVITA | 710



Please turn over for design

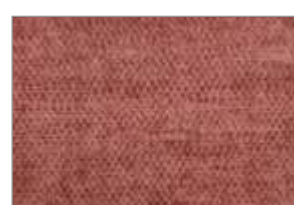
AVITA | 712



VALVETO | 921



IBIZA | 743



IBIZA | 745



AMBER | 114



MARBLE | 734



IBIZA | 785



APACHE | 915



COWBOY | 912

saromi™
combinations unexpected



▲
AVITA

sarom™

combinations are unexpected



| Design | Picture | Shade No. | Width (cm) | GSM | Composition | Verti. repeat (in cm) | Hor. repeat (in cm) | Color Fastness | Abrasion Resistance | Washing Instruction | End Use |
|---------|---------|---------------------|------------|----------|----------------|-----------------------|---------------------|----------------|---------------------|---------------------|---------|
| ★ AVITA | | 701, 704, 707, 710. | 140 | 360 ± 5% | 100% Polyester | 14.50 | 13.50 | 4 | ≥ 60000 | | |
| | | 702, 705, 708, 711 | 140 | 360 ± 5% | 100% Polyester | 14.00 | 14.00 | 4 | ≥ 60000 | | |
| | | 703, 706, 709, 712 | 140 | 360 ± 5% | 100% Polyester | 17.25 | 13.00 | 4 | ≥ 60000 | | |

★ MADE IN INDIA

| Design | Width | GSM | Composition | Color Fastness to light | Abrasion Resistance | Washing Instruction | End Use |
|-----------|-------|----------|----------------|-------------------------|---------------------|---------------------|---------|
| ★ IBIZA | 140 | 360 ± 5% | 100% Polyester | 4 | ≥ 60000 | | |
| ★ MARBLE | 140 | 370 ± 5% | 100% Polyester | 4 | ≥ 45000 | | |
| ALBANY | 140 | 280 ± 5% | 100% Polyester | 4 | ≥ 20000 | | |
| BRONX | 140 | 440 ± 5% | 100% Polyester | 4 | ≥ 20000 | | |
| PARAMOUNT | 140 | 340 ± 5% | 100% Polyester | 4-5 | ≥ 30000 | | |
| APACHE | 140 | 450 ± 5% | 100% Polyester | 3.5 | ≥ 20000 | | |
| AMBER | 140 | 300 ± 5% | 100% Polyester | 4 | ≥ 25000 | | |
| COWBOY | 140 | 310 ± 5% | 100% Polyester | 4 | ≥ 20000 | | |
| ★ VELVETO | 140 | 350 ± 5% | 100% Polyester | 4.5 | ≥ 70000 | | |

1. We do not accept responsibility for any damage resulting from inappropriate use, chemical cleaning or additional impregnation. 2. Test results were gathered from various samples and therefore represent average indicative values. 3. Discolouration caused by clothing fabrics such as jenas does not represent a material defect. Minor colour deviations and discolouring in context of permissible industrial tolerance standards do not constitute reasons for claims.

★ MADE IN INDIA

Image printed for design reference only.

www.sarom.co.in

/saromfab

Color may vary from batch to batch

Complimentary Sample File, Not for Sale

sarom ™
combinations unexpected




AVITA